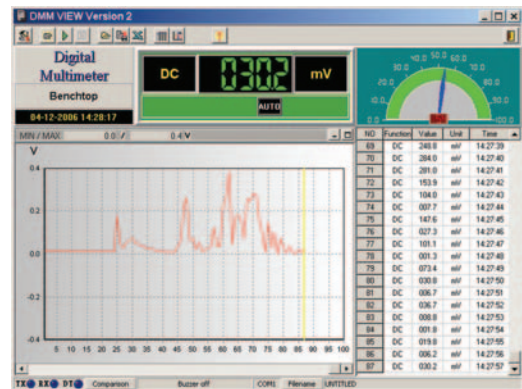


- True RMS AC volts and amps measurements
- Capacitance and Frequency measurements
- Back-lit display and Auto/Manual ranging
- MIN/MAX and Relative mode
- Delay hold mode
- AC Line or Battery Operated
- RS-232 Interface with software
- Portable or Bench with Pop-up Stand
- Storage Compartment



B940



Software Display

■ SPECIFICATIONS

DC Voltage

Range: 400mV, 4V, 40V, 400V and 1000V
 Best Resolution: 0.1mV
 Accuracy: $\pm(0.3\% + 2d)$

AC Voltage

Range: 4V, 40V, 400V and 750V
 Best Resolution: 1.0mV
 Accuracy: $\pm(0.8\% + 5d)$

DC Current

Range: 4mA, 40mA, 400mA and 10A
 Best Resolution: 1 μ A
 Accuracy: $\pm(0.8\% + 5d)$

AC Current

Range: 4mA, 40mA, 400mA and 10A
 Best Resolution: 1 μ A
 Accuracy: $\pm(1.5\% + 5d)$

Resistance

Range: 400 Ω , 4K Ω , 40K Ω , 400K Ω , 4M Ω , 40M Ω
 Best Resolution: 0.1 Ω
 Accuracy: $\pm(0.5\% + 5d)$

Frequency

Range: 100Hz, 1KHz, 10KHz and 600KHz
 Best Resolution: 0.01Hz
 Accuracy: $\pm(0.1\% + 2d)$

Capacitance

Range: 4nF, 40nF, 400nF, 4 μ F, 40 μ F
 Best Resolution: 0.1pF
 Accuracy: $\pm(2\% + 4d)$

Diode test

Test Volt: 3 V
 Test Current: 0.6mA

Continuity

Buzzer: will sound at < 40 Ω Resistance

General Specifications

Size: 3.3" (H) x 9.0" (W) x 9.4" (D)
 Weight: 3.3 lbs
 Power: 9V NEDA battery (not supplied) or 90 to 132VAC / 198 to 264VAC @ 50/60Hz (Adapter Supplied)
 Accessories: Manual, Test leads, Carrying strap, Line cord, RS-232 cable, Software CD